

# Ερευνητικές Υποδομές (Research Infrastructures)

Π. Αργυράκης  
Τμήμα Φυσικής

# Δράσεις χρηματοδότησης απο την Ευρωπαϊκή Επιτροπή

- **Cooperation**

το βασικό εργαλείο (2/3 των πόρων)  
συνεργασία εργαστηριών

- **People**

υποτροφίες Marie-Curie, ITN

- **Ideas**

ERC(European Research Council)  
μεγάλες (αλλά λίγες) χρηματοδοτήσεις

- **Research Infrastructures**

οι ερευνητικές υποδομές

# Ερευνητικές Υποδομές

- Υποδομές για χρήση για όλη την Ευρώπη
- Χρηματοδοτούνται μικρά και μεγάλα έργα
- **Δεν υποστηρίζουν την έρευνα άμεσα**
- Η δράση μπορεί να είναι συγκεντρωμένη τοπικά σε ένα σημείο (π.χ. Υποδομή Laser)
- Ή μπορεί να είναι διεσπαρμένη (π.χ. GRID)

# Πως επιλέγονται τα θέματα?

- Προσκλήσεις ενδιαφέροντος – Calls
- Από τον οδικό χάρτη

# Ευρωπαϊκές Επιτροπές Στρατηγικής

- **ESFRI**

(European Strategic Forum for Research Infrastructures)

- **e-IRG**

(electronic Infrastructure Reflection Group)

Προτείνουν την στρατηγική που πρέπει να ακολουθήσει η Ε.Ε.  
σε θέματα υποδομών

Ετοιμάζουν τον Οδικό Χάρτη της Ε.Ε.

# Παραδείγματα:

**CLARIN** — Research Infrastructure to make language resources and technology available and useful to scholars of all disciplines

**DARIAH** — Digital Infrastructure to study source materials in cultural heritage institutions

# EMFL: European Magnetic Field Laboratory

EMFL has been on the ESFRI Roadmap since 2008. The aim is to create a distributed European Magnetic Field Laboratory including HFML (RU/FOM), LNCMI-G&T (CNRS) and HLD (HZDR). The EC funded Preparatory Phase will run from the beginning of 2011 until the end of 2013. The goal of the Preparatory Phase of the project is to investigate all legal, financial, organisational and employment related issues, and to formulate a document for the founding agreement of the EMFL between the three partners and any other stakeholders that might be identified, although many decisions and the related documentation are still to be agreed.

The EMFL founding partners have access to high magnetic field facilities, which re-



The EMFL develops and operates world class high magnetic field facilities, to use them for excellent research by in-house and external users.

# LASERLAB: Κρήτη

Contact Info | Phonebook |

SEARCH  →



[Home page](#)

[About](#)

[News](#)

[Administration](#)

[People](#)

[Research](#)

## European Facilities Overview

IESL has continued and expanded its operation as European Facility through its participation in major projects for European Research Infrastructures (RIs). It has continued its operation as a European Laser Facility through its participation in LASERLAB-Europe. Moreover, IESL participates in a European RI for high technology applications in Cultural Heritage (CHARISMA) and for the study of Soft Matter (ESMI).



# Γεωλογία

## EPOS — Infrastructure for the Study of Tectonics and Earth Surface Dynamics

### Key issues and findings

EPOS has been on the ESFRI roadmap since 2008. The scope of EPOS involves all 'physical processes controlling earthquakes, volcanic eruptions, unrest episodes and tsunamis as well as those driving tectonics and Earth surface dynamics'. In addition it will have, as a long-term plan to facilitate integrated use of data, models and facilities. The stated main objective is to integrate existing research infrastructures into a single permanent organisation. The overall value of the existing national research infrastructures presently engaged in the EPOS integration plan is estimated at EUR 350 million, which represents



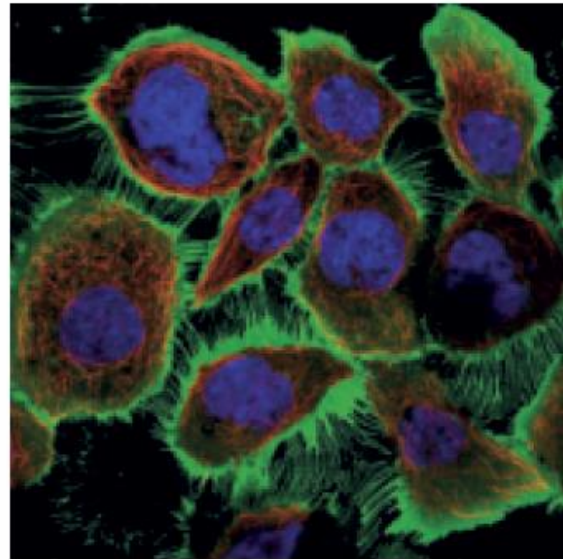
El Mayor Cucupah Fault, Baja California, Mexico,  
© Stefano Pucci - INGV

# Βιολογία

## ELIXIR — Upgrade of the European Life-science Infrastructure for Biological Information

### Key issues and findings

ELIXIR aims at building an effective data infrastructure for biological information that will encompass hundreds of existing biological databases in Europe, ranging from major core datasets — such as the vertebrate genomes in Ensemble — to very small specialist collections overseen on a part-time basis by individual researchers. ELIXIR has been on the ESFRI Roadmap since 2006. It is coordinated by EMBL's European Bioinformatics Institute (EBI) in the UK that serves as the central hub for ELIXIR. The present membership includes Czech Republic, Denmark, Estonia, Finland, Israel, Italy, Netherlands, Norway, Portugal, Slovenia, Sweden, Spain, Switzerland and the UK.



Immunofluorescent staining of A-431 epidermoid carcinoma cells shows positivity in plasma membrane.

Figures provided for the ESFRI 2010 Roadmap indicated that the construction costs of

## EMBRC — European Marine Biological Resource Centre

### Key issues and findings

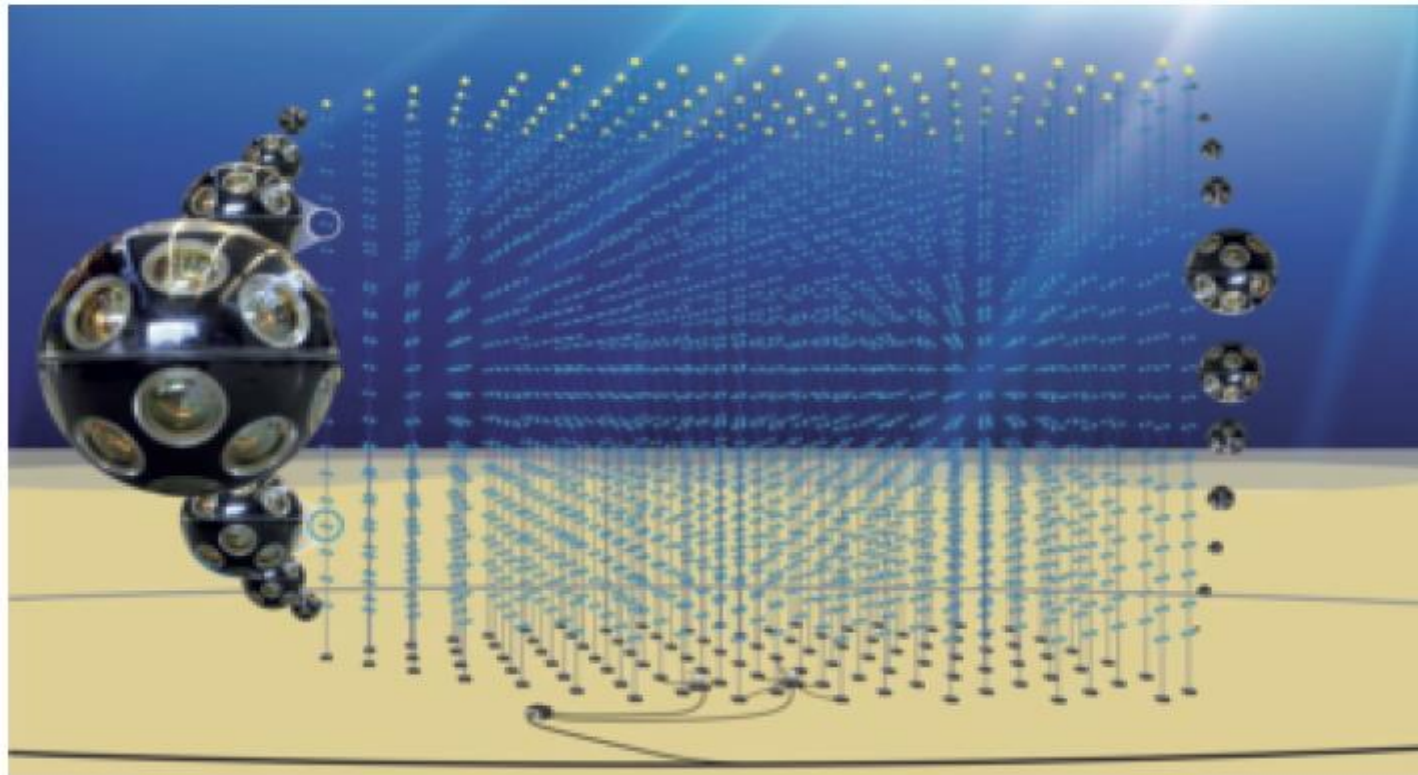
EMBRC (European Marine Biological Resource Centre) is a distributed research infrastructure uniting leading marine research stations across Europe. Italy, France, Germany, Greece, Norway, Portugal, Sweden and the UK are involved as partners. It has been on the ESFRI Roadmap since 2008. The Preparatory Phase runs from 2011 to April 2014. An MoU is under development and there has been a unanimous decision to go for an ERIC or an ERIC-like legal structure for the EMBRC core, which will be separate from the nodes. It is expected that the relationship between the core and the nodes will be

clarified in the final statutes, with the intention that the nodes maintain their legally autonomous state. During the Preparatory Phase, technical, legal, governance and financial issues will be addressed to prepare the MoU enabling the implementation of EMBRC. EMRI France Italy Portugal Greece and Israel will most likely sign the MoU. The project



Model organism: *Veretillum cynomorium*, CCMAR - Centre of Marine Sciences (University of Algarve). © Peter Wirtz

# KM3NeT — Kilometre Cube Neutrino Telescope



Artist's conception of the neutrino telescope of the KM3NeT Research Infrastructure. A total of about 640 string detection units supporting an array of about 12800 Digital Optical Modules (DOMs) anchored in the deep seas of the Mediterranean for measuring the faint light of charged particles created in the collisions of neutrino's with the matter inside or in the vicinity of the telescope. © KM3NeT Collaboration

# Συμπέρασμα:

- Οι ευκαιρίες υπάρχουν
- Τα Calls είναι συνεχή
- Η πληροφόρηση υπάρχει
- μπορεί να γίνει ακόμα και με το google